



Lot nr.: L261921

Land/Typ: Asien und Ozeanien

Seychellen-Sammlung, auf Albumseiten, aus dem Jahr 1954, mit postfr. Briefmarken.

Preis: 130 eur

[Gehen Sie auf die viel auf www.briefmarken-liste.com]

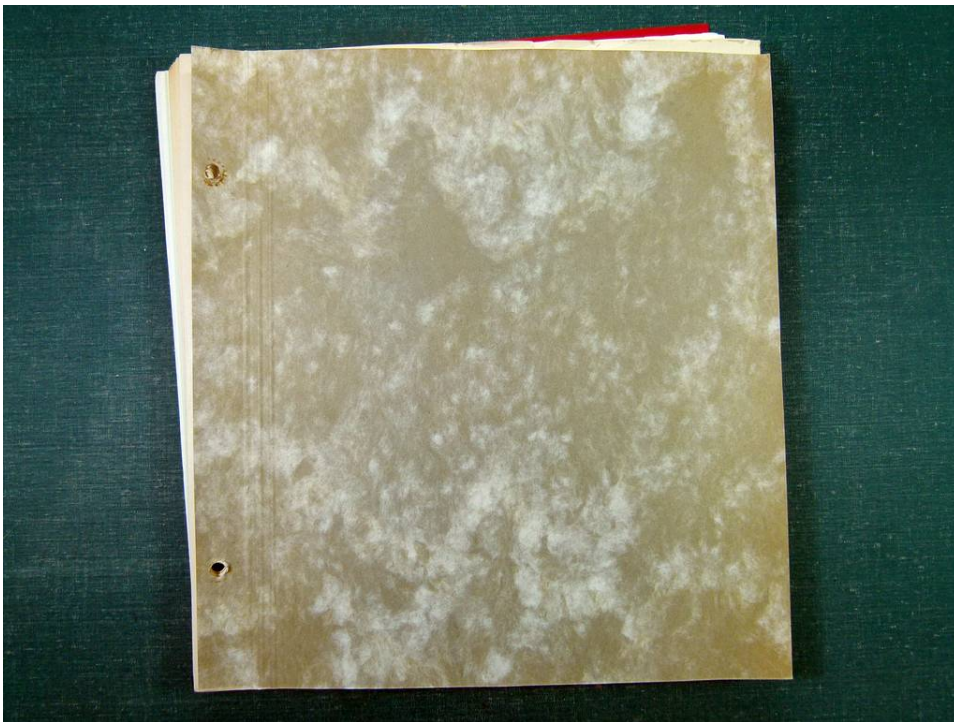




Foto nr.: 2





Foto nr.: 3





Foto nr.: 4





Foto nr.: 5





Foto nr.: 6





Foto nr.: 7





Foto nr.: 8





Foto nr.: 9





Foto nr.: 10





Foto nr.: 11





Foto nr.: 12





Foto nr.: 13

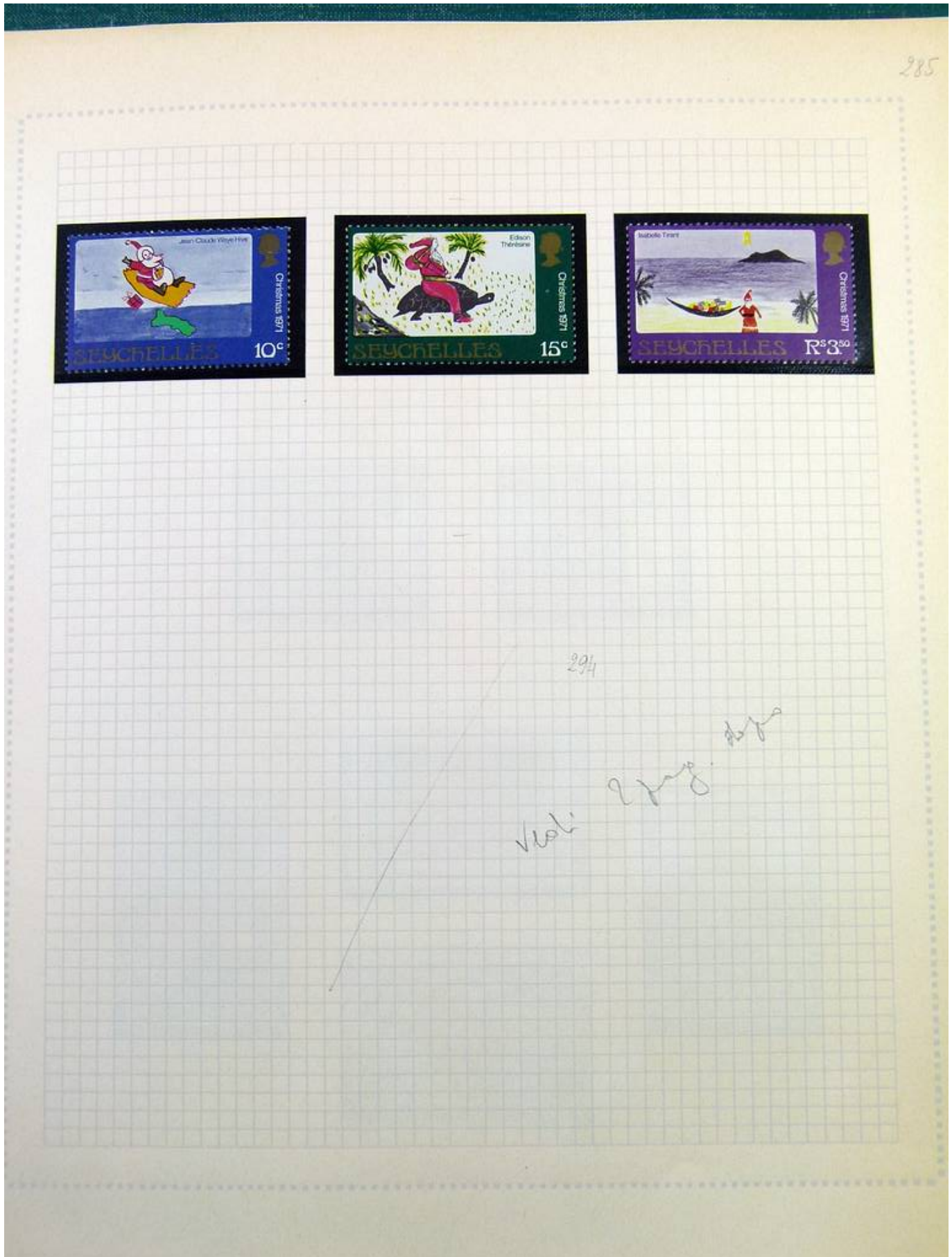




Foto nr.: 14





Foto nr.: 15





Foto nr.: 16





Foto nr.: 17





Foto nr.: 18

317





Foto nr.: 19





Foto nr.: 20





Foto nr.: 21





Foto nr.: 22





Foto nr.: 23





Foto nr.: 24





Foto nr.: 25





Foto nr.: 26

392





Foto nr.: 27

405





Foto nr.: 28

409





Foto nr.: 29

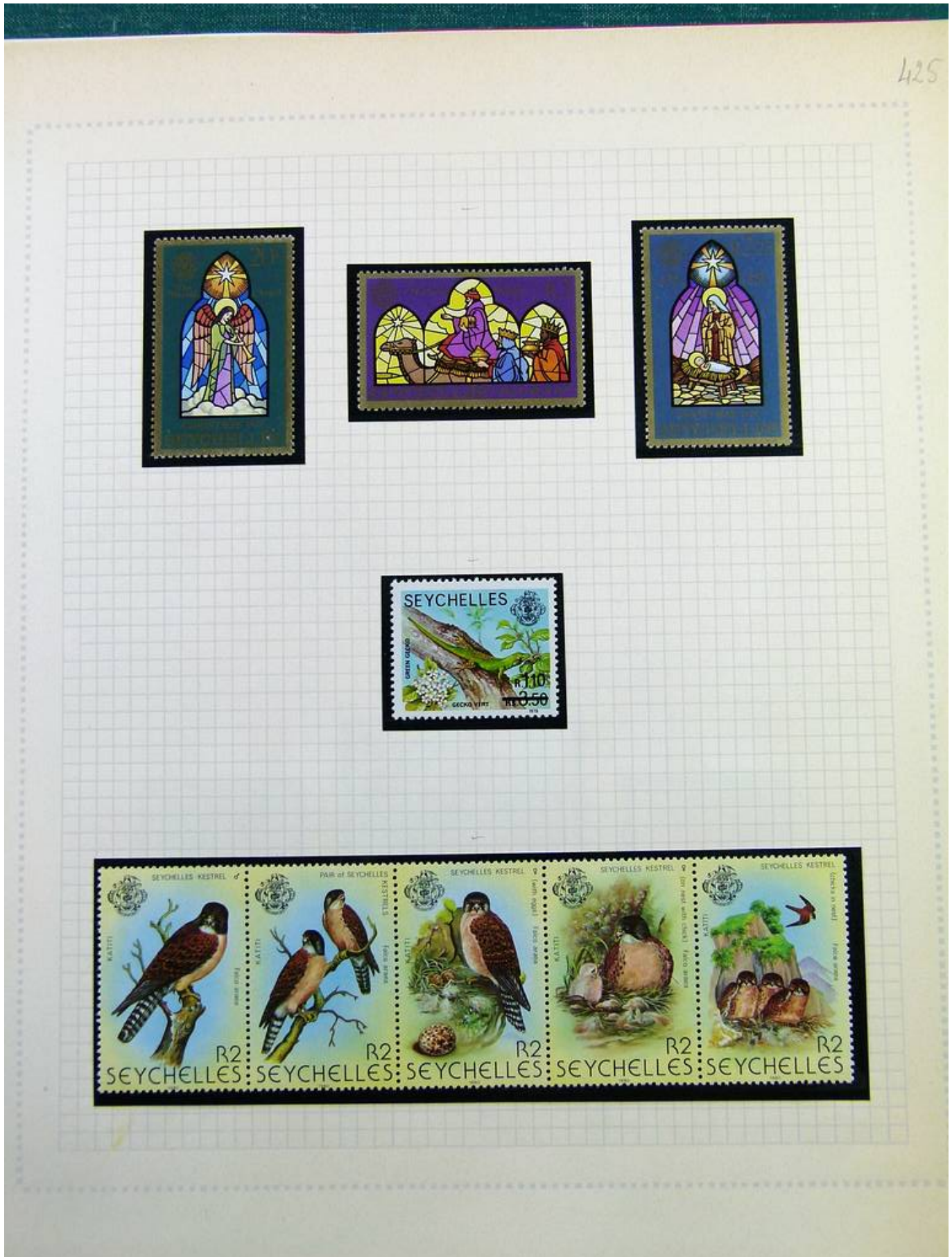




Foto nr.: 30





Foto nr.: 31





Foto nr.: 32





Foto nr.: 33





Foto nr.: 34



THE RURAL POSTS OF THE SEYCHELLES

BELOMBRE
C
AP 28
04
UNKNOWN

TAKAMAKA
C
AP 25
01
1901-7



1900-15

SEYCHELLES
A
AP 15
01

1932-49

BAY SAINTE PRAXINE
1-9-38
SEYCHELLES

Rural Posts were established in Seychelles by Ordinance No 84 of 1893. Regulations under the Ordinance laid down that on and after the 18th September 1893 a rural postal service would be established at Anse Royale, Anse Boileau, Port Glaud (all on the island of Mahe), Praslin and La Digue. The non-commissioned officers in charge of Police Stations in those areas were to act as receiving and despatching officers. The Ordinance states: "They will also be entrusted to a certain stock of stamps and postcards for sale." However, the administration of this service was to prove too onerous and on July 7th 1896 the Legislative Council decided to discontinue it. In November 1899 the Hon. E. B. Sweet-Escott, C.M.G., arrived in Seychelles to take up duty as Administrator. One of the first things to which he turned his attention was a revival of the Rural Postal Service. In December 1901 regulations were made by him for "... carrying out an inland postal service in Seychelles". A twice weekly collection and delivery service was established in twenty-one areas of Mahe, on Praslin and on La Digue. This time, while the Police were used, the service was not wholly dependent upon them. The new service was a complete success and provided the foundations upon which today's postal service in Seychelles was built.

1901-16

CASCADE
C
AP 25
01

ANSE BOILEAU
A
AP 9
04
1901-6



Foto nr.: 35



4th Pan African Ornithological Congress SEYCHELLES



FOURTH PAN-AFRICAN ORNITHOLOGICAL CONGRESS

Specialists from all over the world are meeting in the Seychelles with the particular aim of discussing mutual interests and furthering our knowledge of the birds of Africa and its associated islands.

The Seychelles Paradise Flycatcher

The Paradise Flycatcher, with its two central tail feathers almost 12 inches in length, is one of Seychelles' most attractive birds. It is confined to the island of La Digue where it lives in dense woodland on the forested plateau. It feeds on insects which it catches in mid-flight.

The Seychelles Spinbird

The Spinbird is a lively little bird with a short, metallic voice. It feeds on insects and nectar. The bird is not migratory, although its perpetual search for flowering shrubs and trees causes it to be constantly on the move. It builds an elaborate oval nest suspended from a branch.

The Seychelles White Eye

The White Eye has a small ring of silky white feathers which encircle the eye. This species is common to all parts of eastern Africa and its islands, although the Modesta of Seychelles has lost the yellow pigment common to the rest of the species. It is a very gregarious bird, living in trees and bushes and feeding on insects, fruit and nectar.

The Seychelles Black Parrot

The Seychelles Black Parrot is a forest-dweller, feeding on insects, fruit and nectar. It makes its nest in holes in the trees and is a very capable climber, owing to its elaborate foot structure. It has a harsh, screeching call.





Foto nr.: 37

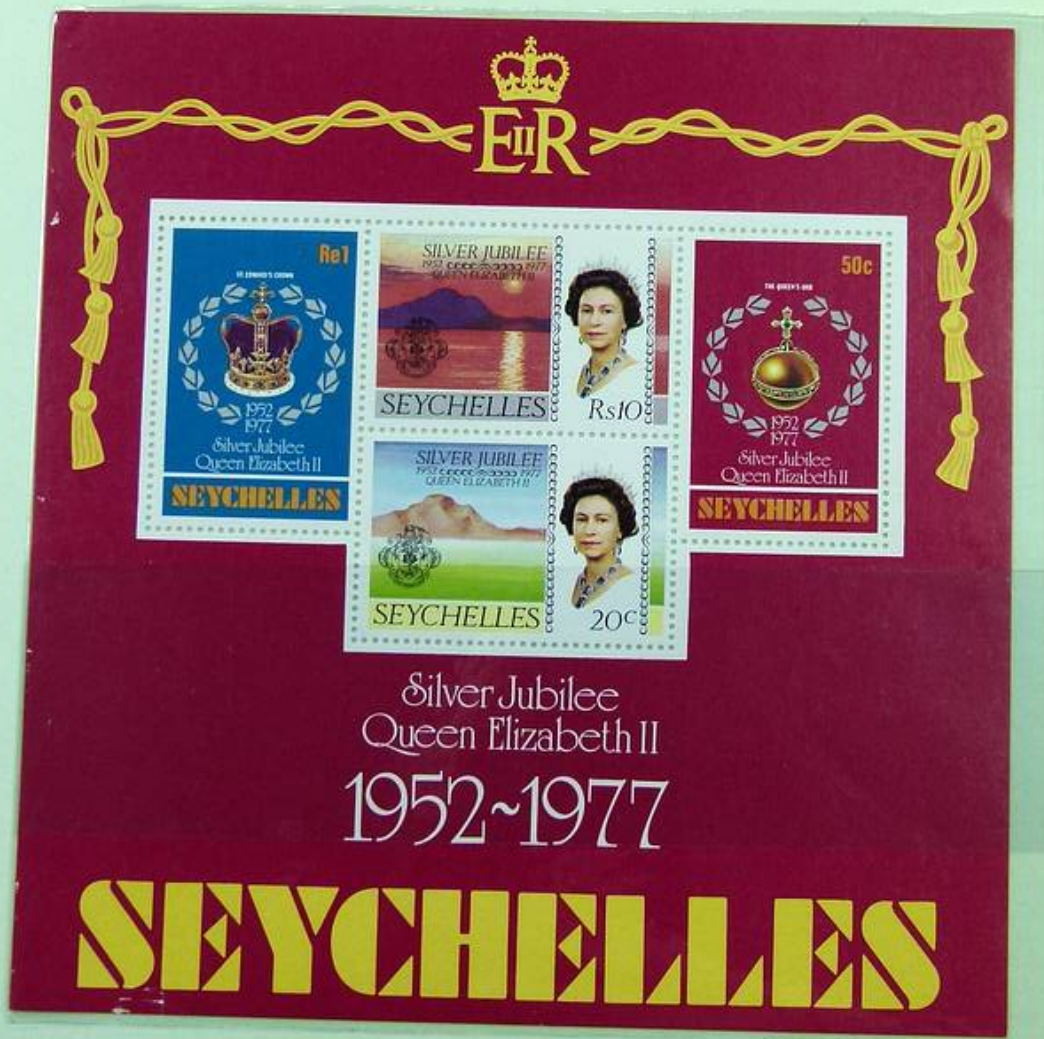




Foto nr.: 38

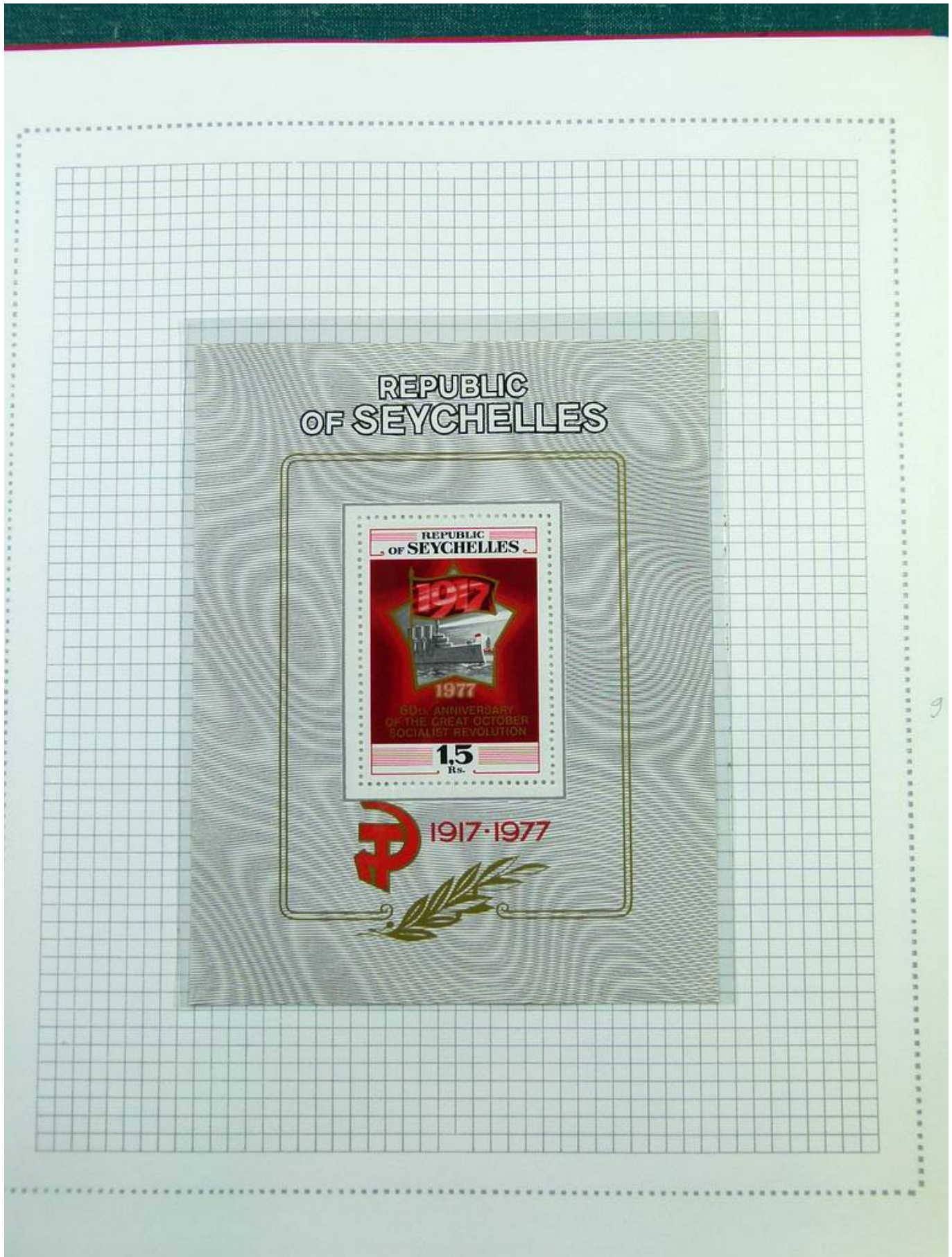




Foto nr.: 39



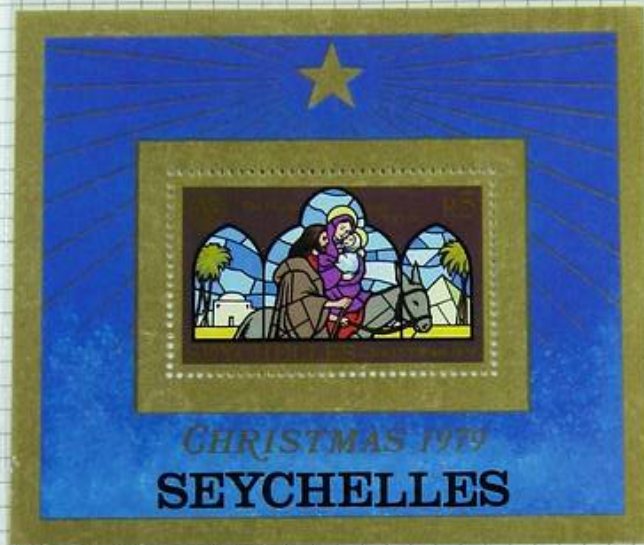


Foto nr.: 40





Foto nr.: 41



12

14



Foto nr.: 42

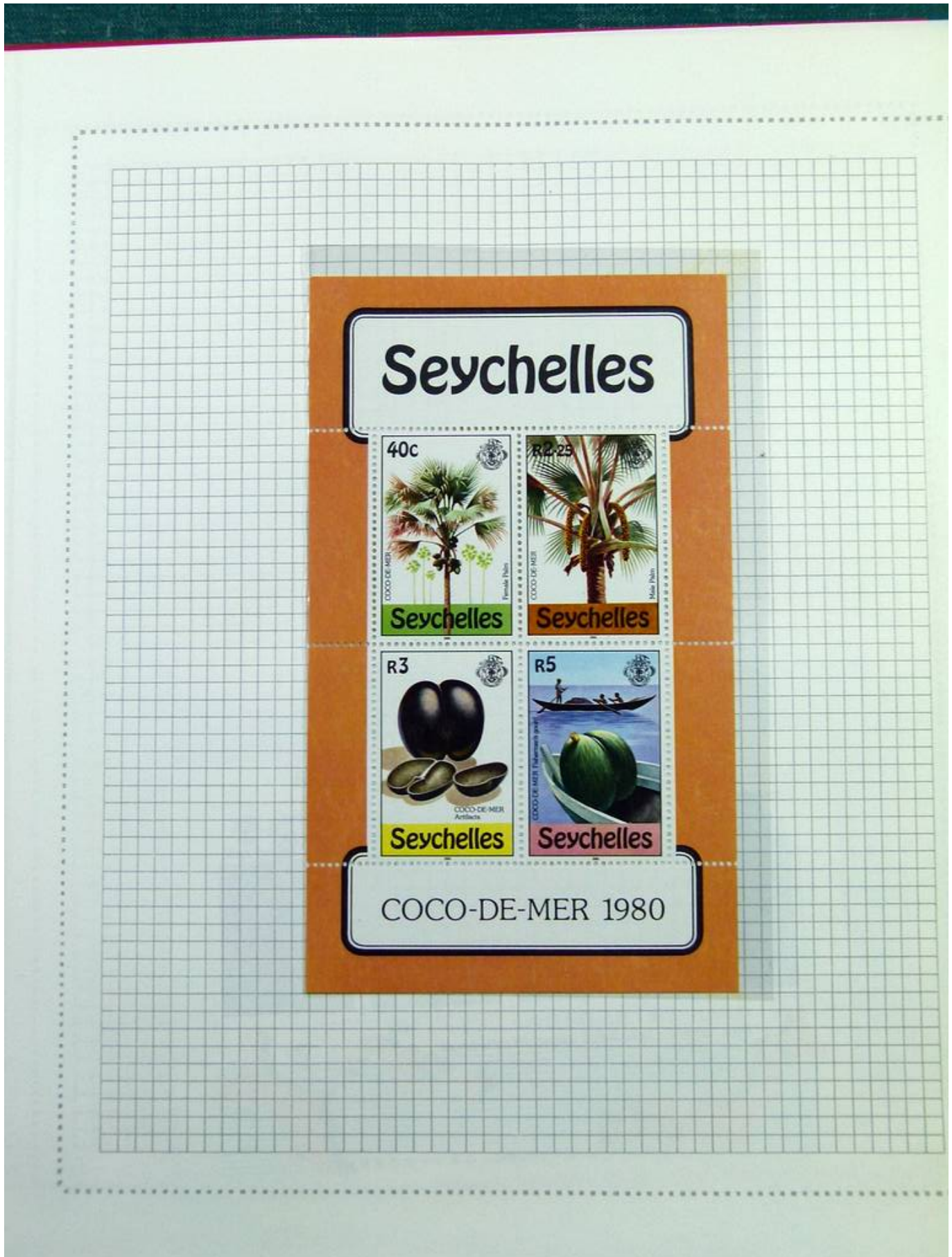




Foto nr.: 43

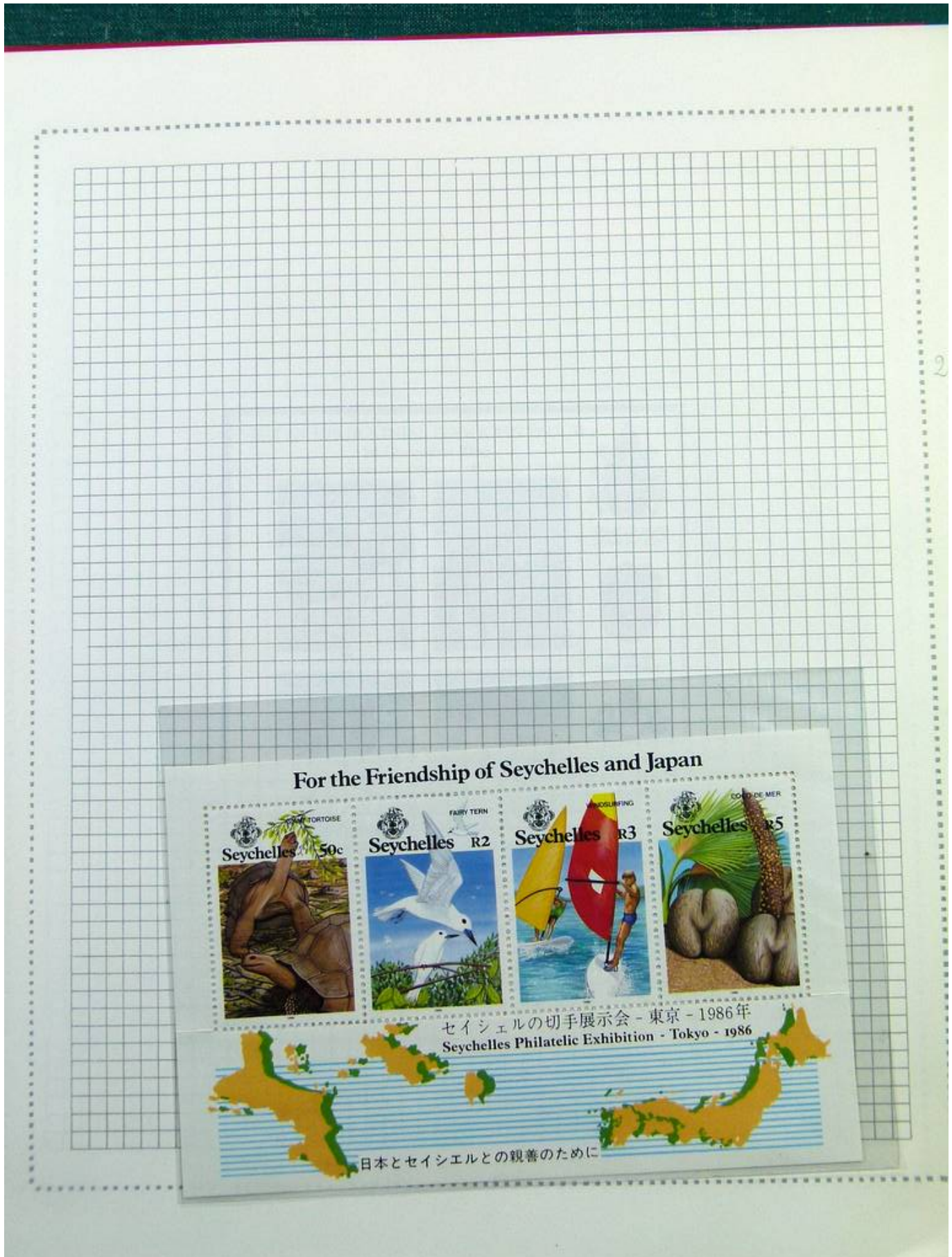




Foto nr.: 44

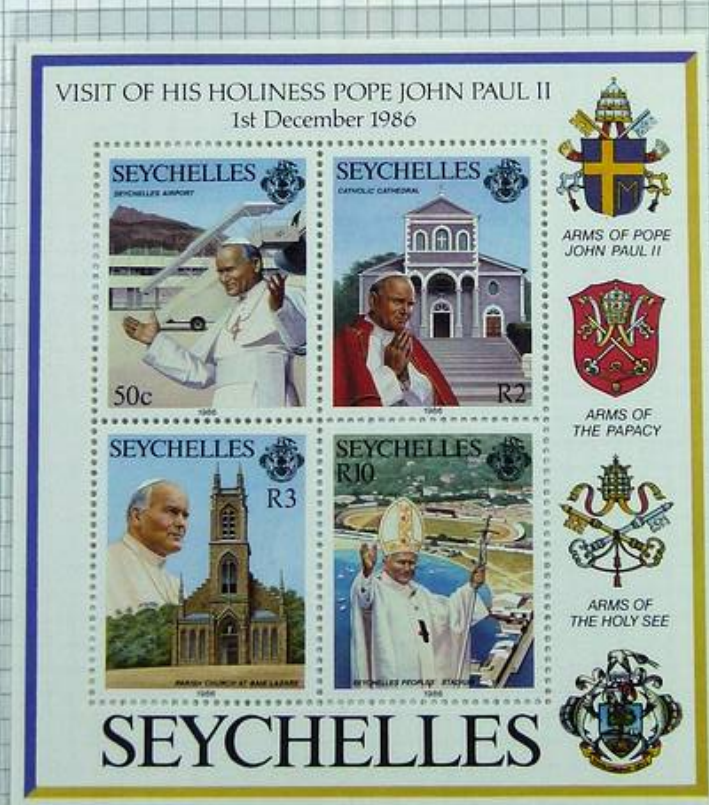




Foto nr.: 45

