

Lot nr.: L253492

Country/Type: Europe

Switzerland collection, on stockbook, from 1991 to 2005, with used stamps.

Price: 45 eur

[[Go to the lot on www.sevenstamps.com](https://www.sevenstamps.com)]

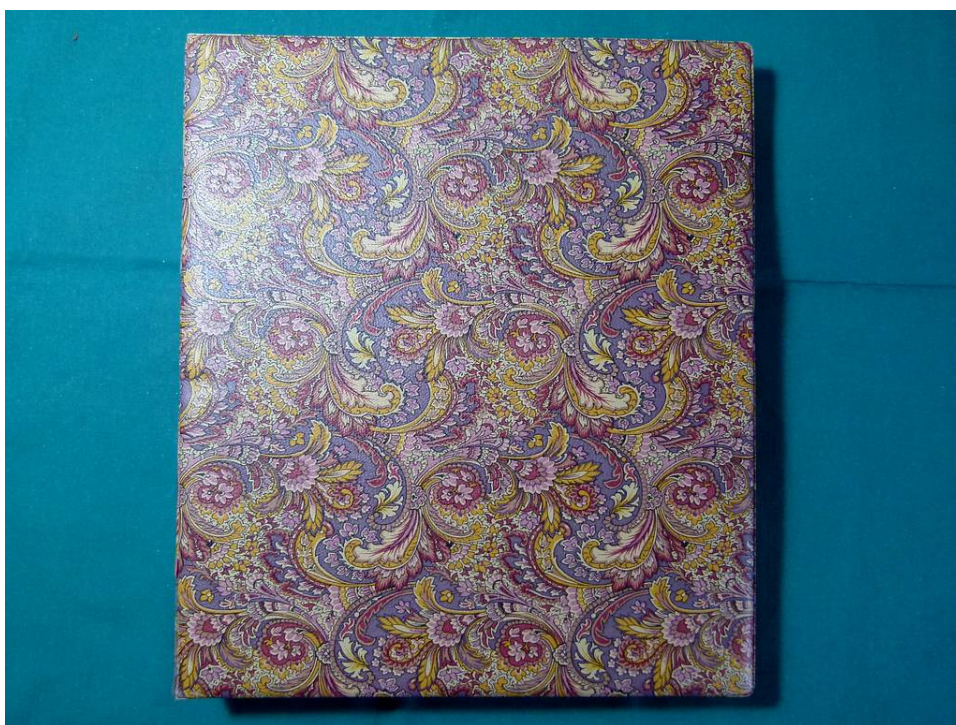


Foto nr.: 2



Foto nr.: 3



Foto nr.: 4



Foto nr.: 5



Foto nr.: 6



Foto nr.: 7



Foto nr.: 8



Foto nr.: 9



Foto nr.: 10



Foto nr.: 11





Foto nr.: 13



Foto nr.: 14



Foto nr.: 15



Foto nr.: 16



Foto nr.: 17



Foto nr.: 18



Foto nr.: 19



Foto nr.: 20



Foto nr.: 21



Foto nr.: 22



Foto nr.: 23



Foto nr.: 24



Foto nr.: 25



Foto nr.: 26



Foto nr.: 27



Foto nr.: 28



Foto nr.: 29





The image shows a dark, textured album page with several horizontal slots. The top slot contains four small, colorful postage stamps. The middle slot contains a long, horizontal strip of four postage stamps. The bottom slot contains a single, larger postage stamp. The stamps feature various designs, including figures, landscapes, and text in multiple languages.

The top row of stamps (from left to right):

- A stamp with a colorful, abstract design and the text "HELVETIA 90" and "2000 NEUCHÂTEL 23.11.1998".
- A stamp with a colorful, abstract design and the text "HELVETIA 90" and "2000 NEUCHÂTEL 23.11.1998".
- A stamp with a colorful, abstract design and the text "HELVETIA 90" and "2000 NEUCHÂTEL 23.11.1998".
- A stamp with a colorful, abstract design and the text "HELVETIA 90" and "2000 NEUCHÂTEL 23.11.1998".

The middle row of stamps (from left to right):

- A stamp with a colorful, abstract design and the text "HELVETIA 90" and "2000 NEUCHÂTEL 23.11.1998".
- A stamp with a colorful, abstract design and the text "HELVETIA 90" and "2000 NEUCHÂTEL 23.11.1998".
- A stamp with a colorful, abstract design and the text "HELVETIA 90" and "2000 NEUCHÂTEL 23.11.1998".
- A stamp with a colorful, abstract design and the text "HELVETIA 90" and "2000 NEUCHÂTEL 23.11.1998".

The bottom row of stamps (from left to right):

- A stamp with a colorful, abstract design and the text "HELVETIA 90" and "2000 NEUCHÂTEL 23.11.1998".

Foto nr.: 31



Foto nr.: 32



Foto nr.: 33



Foto nr.: 34



Foto nr.: 35



Foto nr.: 36



Foto nr.: 37



Foto nr.: 38



Foto nr.: 39



Foto nr.: 40



Foto nr.: 41



Foto nr.: 42



Foto nr.: 43



Foto nr.: 44

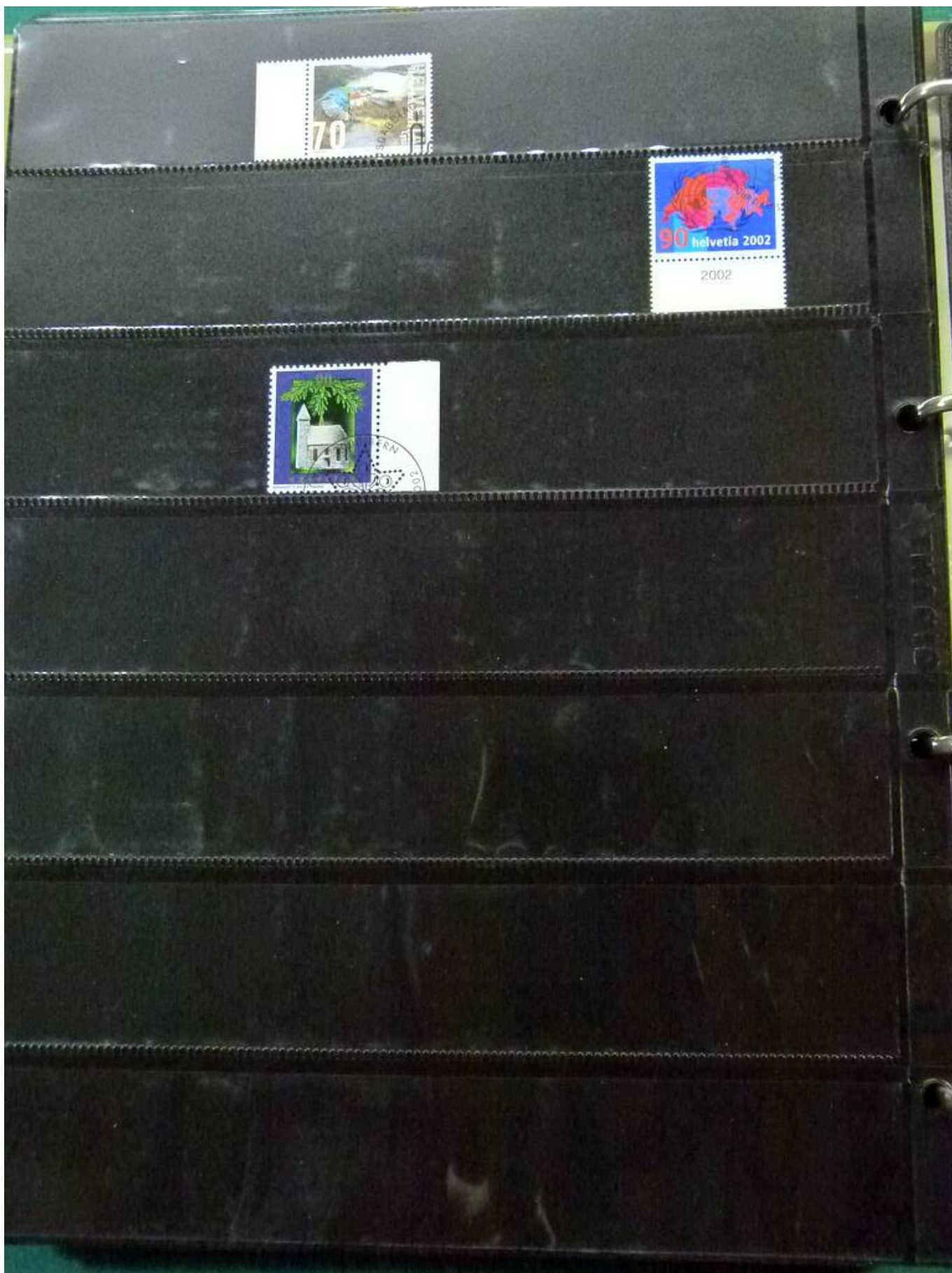


Foto nr.: 45



Foto nr.: 46





Foto nr.: 48



Foto nr.: 49



Foto nr.: 50



Foto nr.: 51



Foto nr.: 52



Foto nr.: 53



Foto nr.: 54

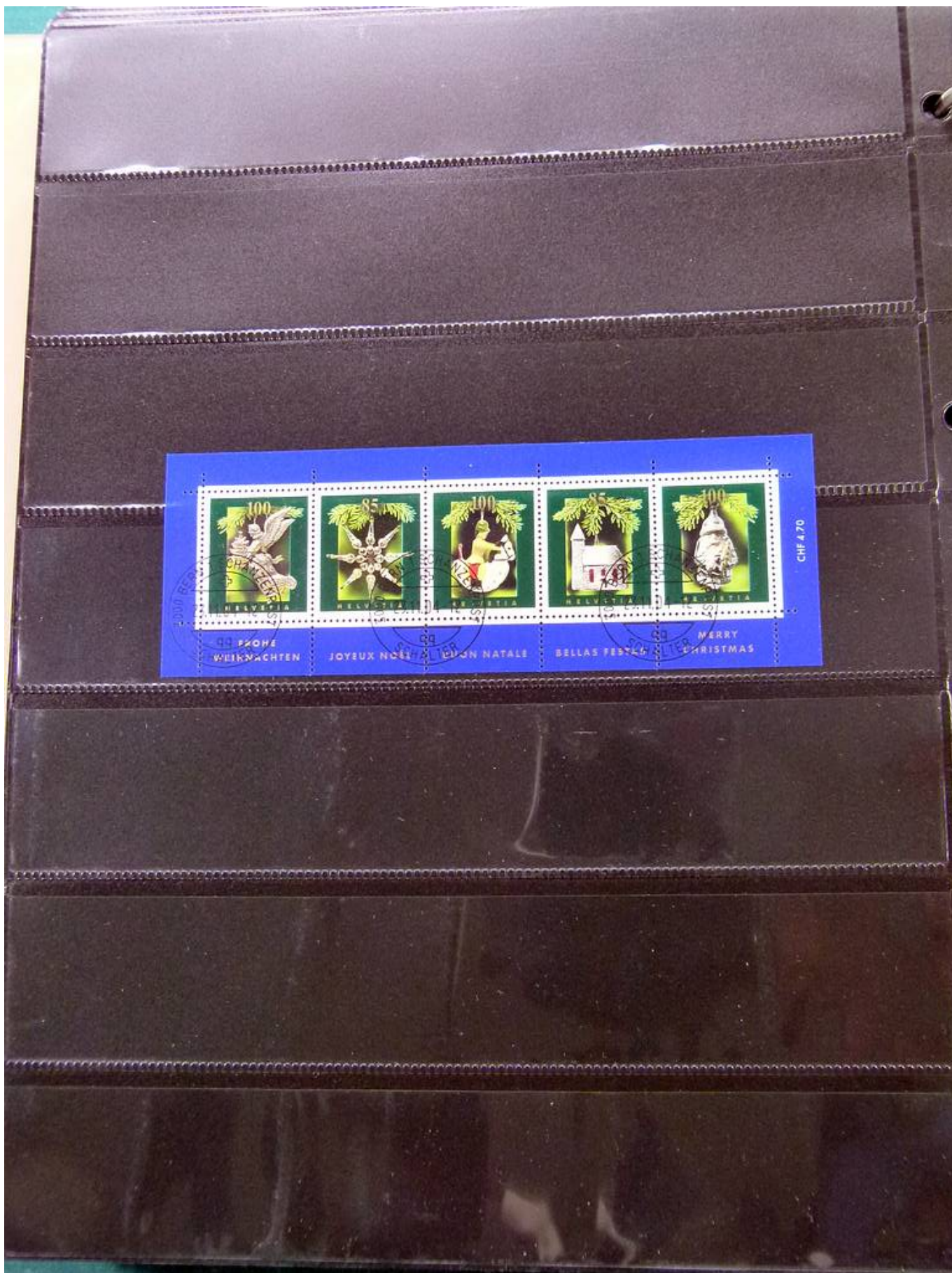


Foto nr.: 55

